

Flanders Park
Restrooms
Dolores, CO

FOR PRELIMINARY PRICING

ISSUED:
01.17.22
FOR PRELIMINARY
PRICING

3D Views

A0.1



View from NW



View from NE



View from SW



View from SE

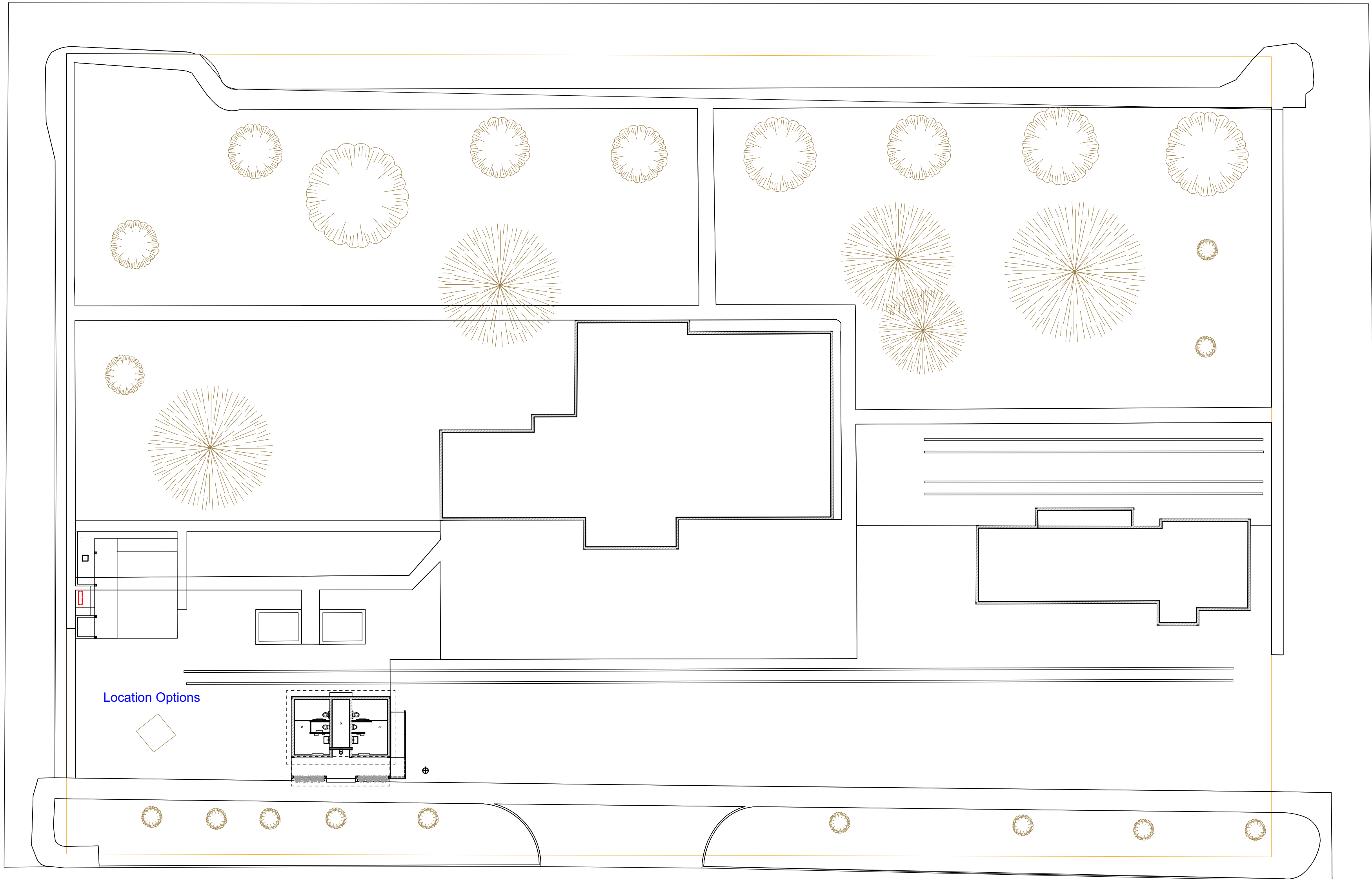
Flanders Park
Restrooms
Dolores, CO

FOR PRELIMINARY PRICING

ISSUED:
01.17.22
FOR PRELIMINARY
PRICING

Site Plan
1" = 20'

A0.2



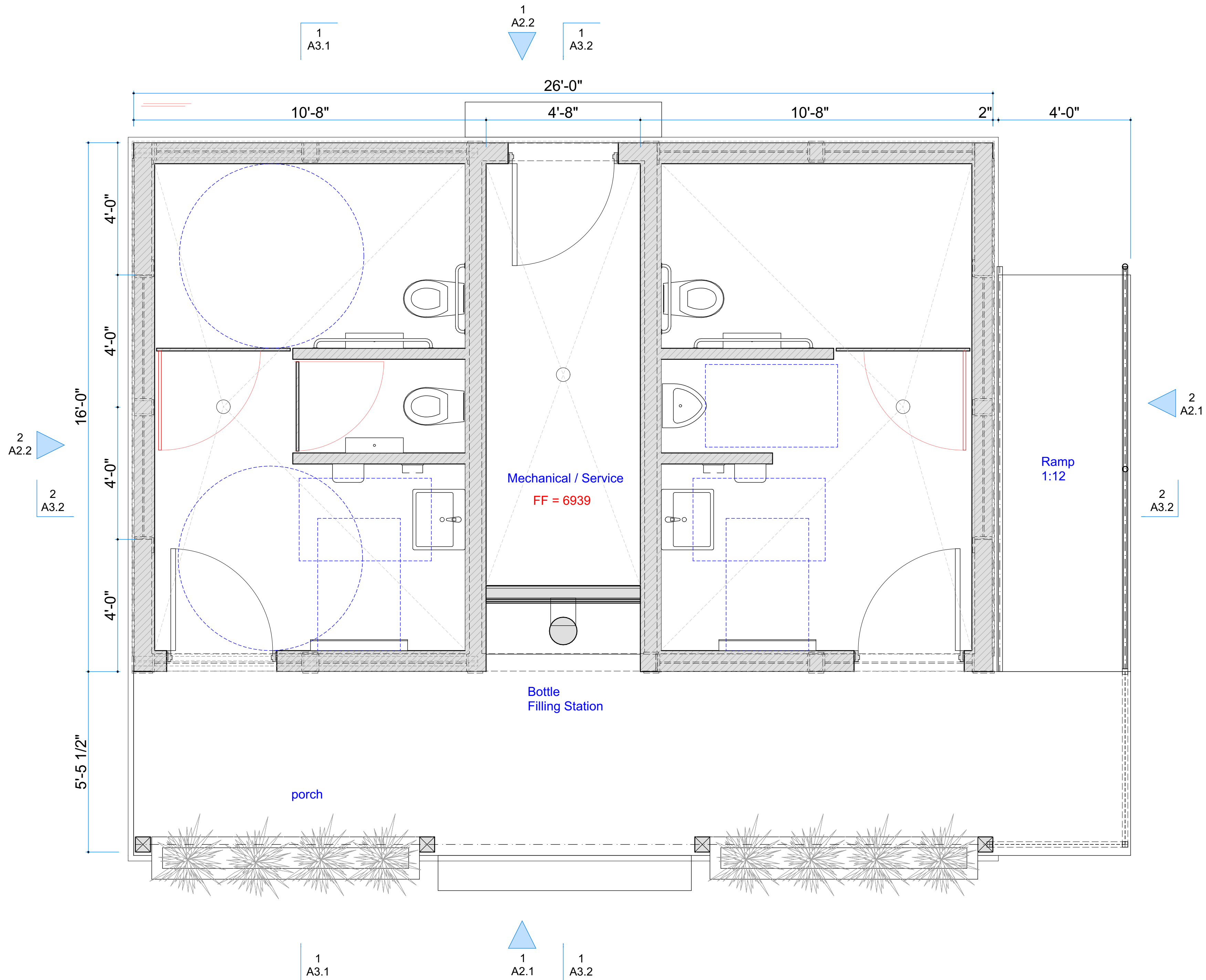
Flanders Park Restrooms
Dolores, CO

FOR PRELIMINARY PRICING

ISSUED:
01.17.22
FOR PRELIMINARY PRICING

Floor Plan
1/2" = 1'

A1



Flanders Park
Restrooms
Dolores, CO

FOR PRELIMINARY PRICING

ISSUED:
01.17.22
FOR PRELIMINARY
PRICING

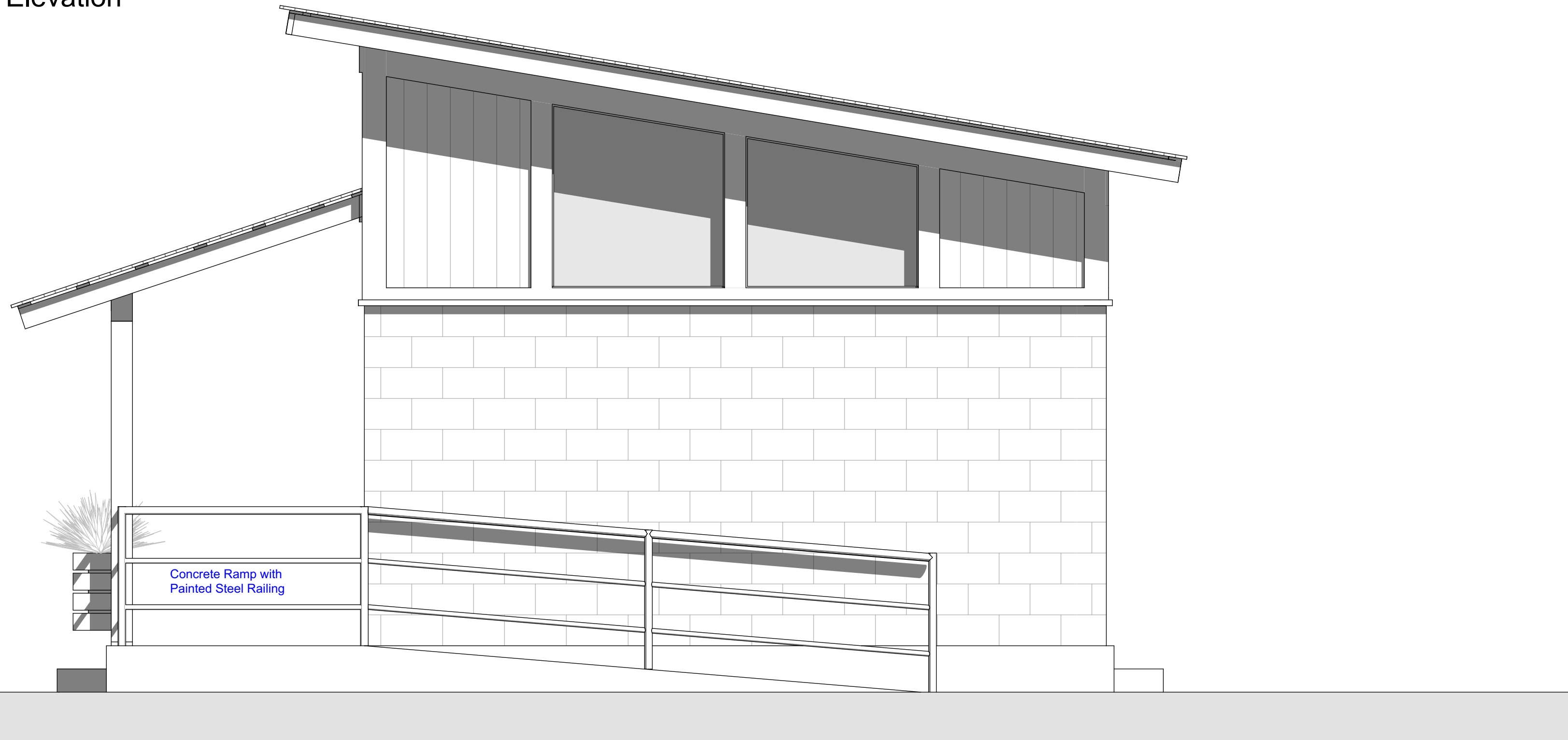
South & East
Elevations

1/2" = 1'

A2.1



South Elevation



East Elevation

Flanders Park
Restrooms
Dolores, CO

FOR PRELIMINARY PRICING

ISSUED:
01.17.22
FOR PRELIMINARY
PRICING

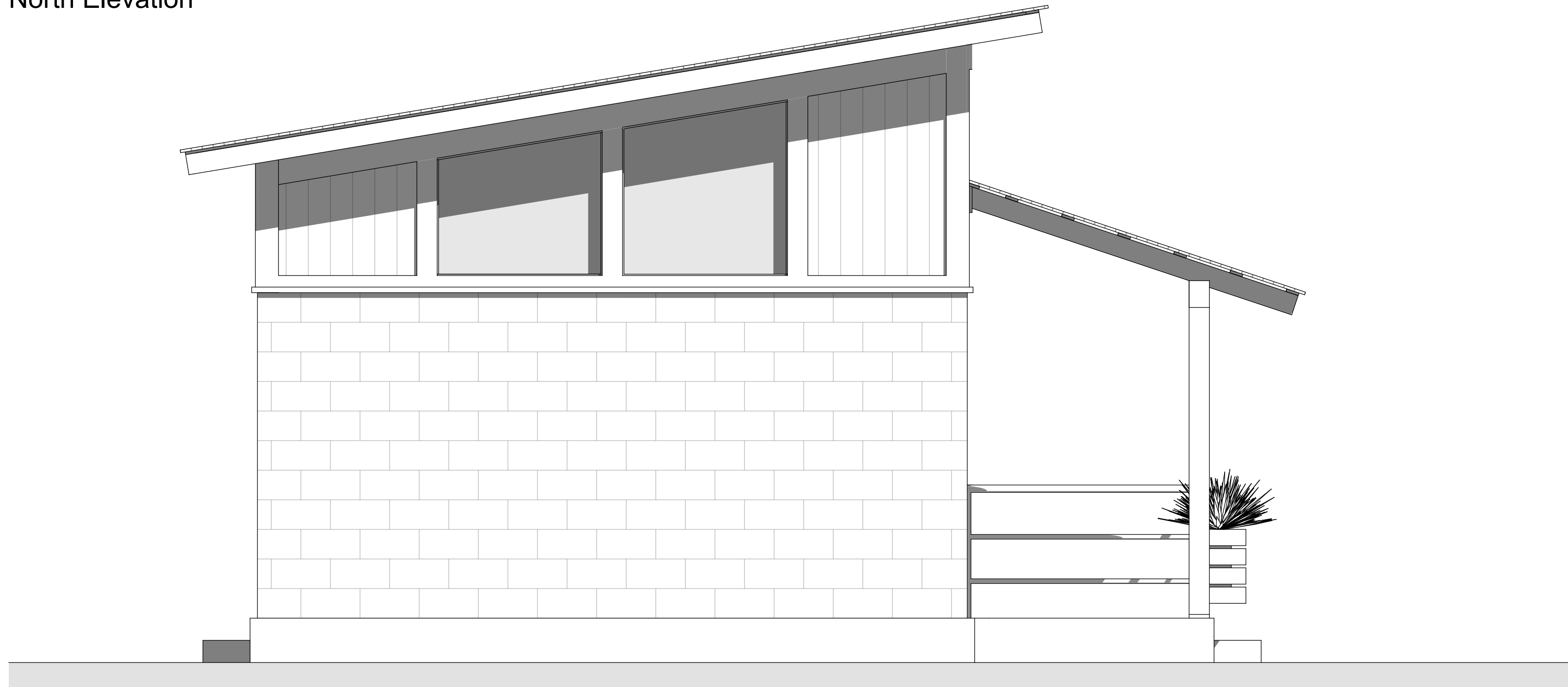
North and West
Elevations

1/2" = 1'

A2.2



North Elevation



West Elevation

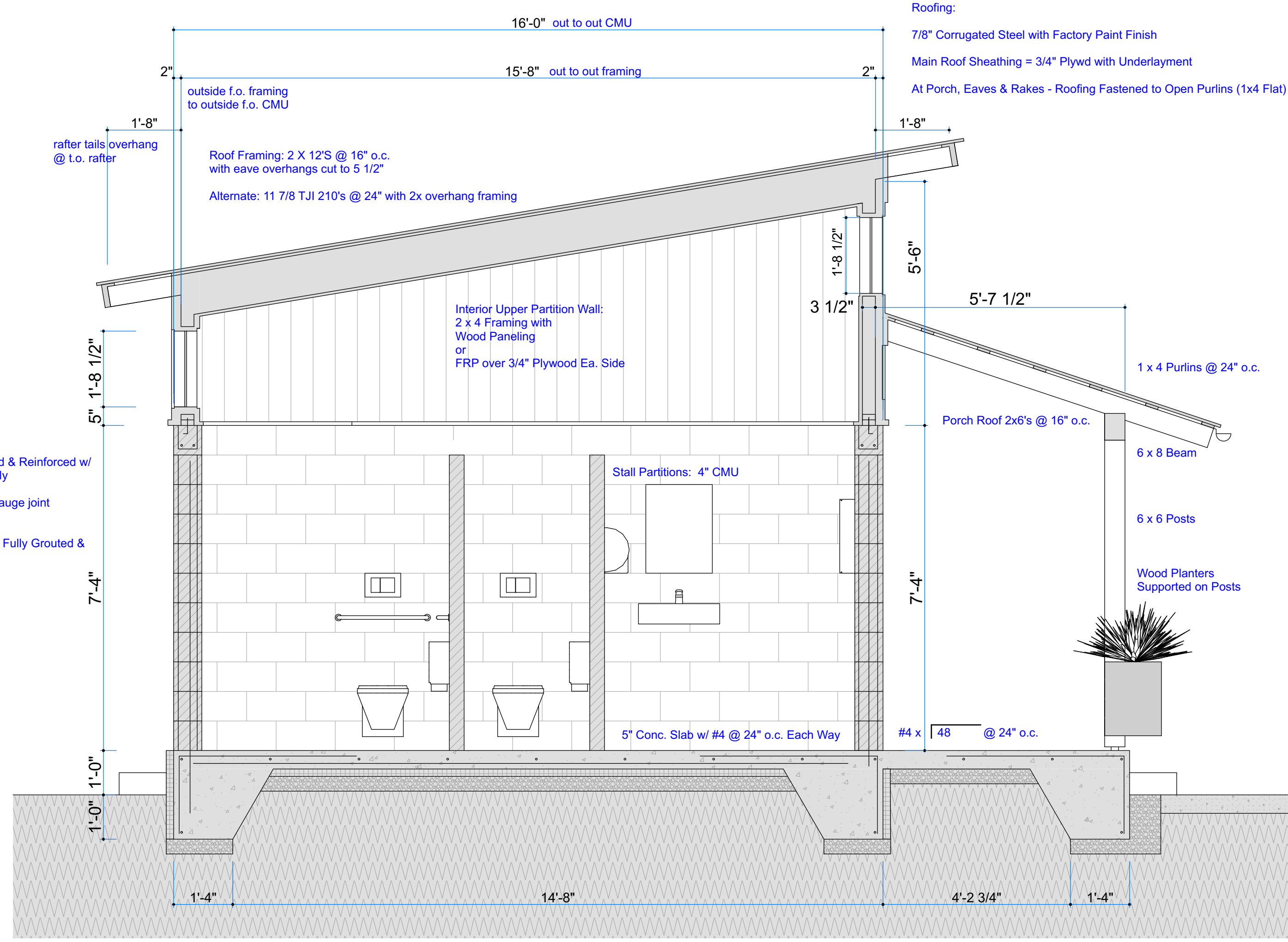
Flanders Park Restrooms
 Dolores, CO

FOR PRELIMINARY PRICING

ISSUED:
 01.17.22
 FOR PRELIMINARY PRICING

Section
 1/2" = 1'

A3.1



Section @ West Restroom

Flanders Park Restrooms
Dolores, CO

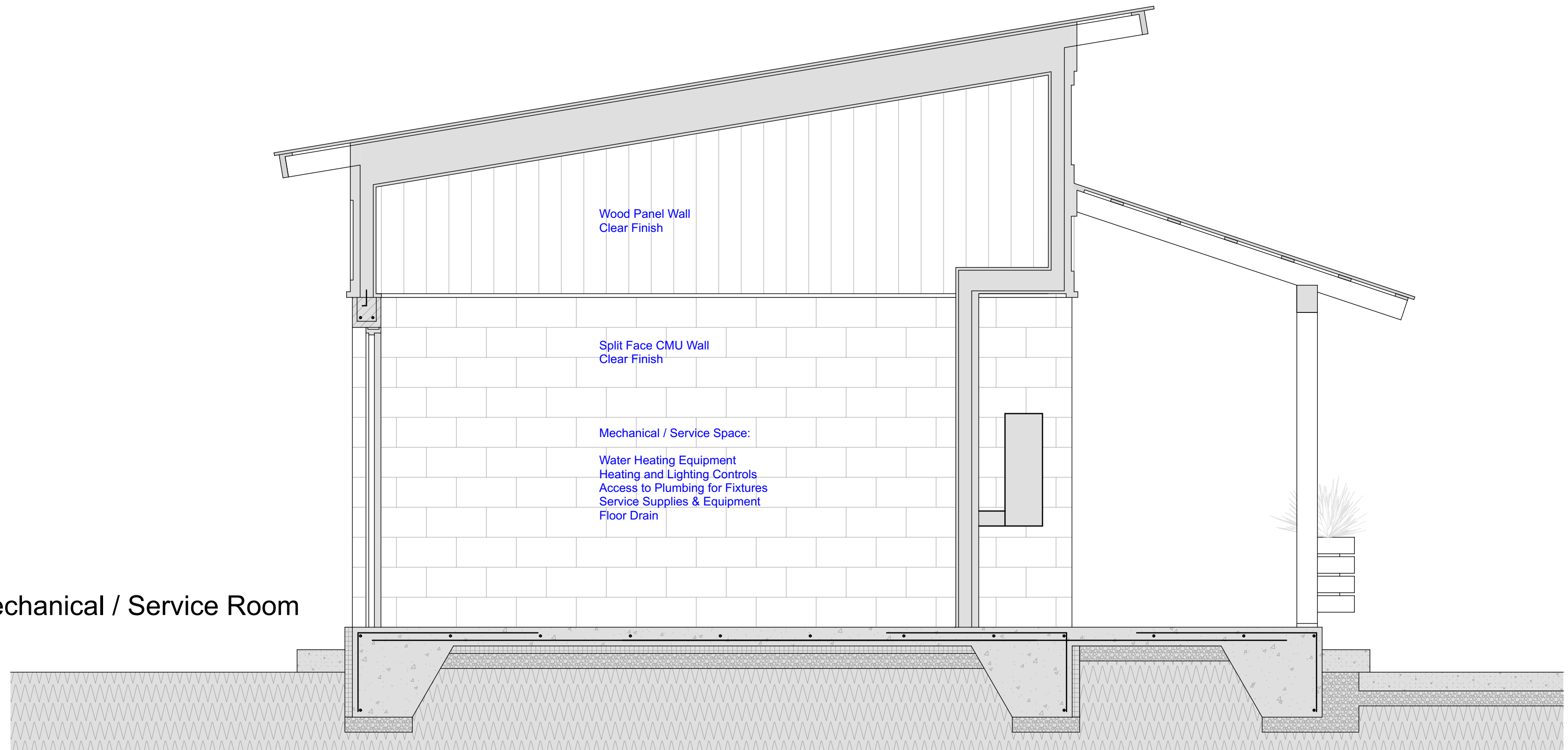
FOR PRELIMINARY PRICING

ISSUED:
01.17.22
FOR PRELIMINARY PRICING

Sections
1/2" = 1'

A3.2

Section @ Mechanical / Service Room



Section Looking North



Division 4 Masonry

Exterior Walls: 8" Split Face CMU, Gray
Interior Partitions: 4" Smooth Face CMU, Gray

Prices @ Brickyard Masonry Grand Junction [1/14/22]
8" split face 2.69 ea.
4" smooth face 1.59 ea.
<https://www.brickyardcolorado.com/block/>

Division 6 Wood & Plastics

Wood Framing @ Clerestory Walls & Main Roof Rafters: Hem-Fir, sizes as noted
Porch Posts, Beam & Rafters: Hem-fir or Doug Fir #2, sizes as noted

Division 7 Thermal and Moisture Protection

7.1 Insulation:

7.1.1 Rigid Insulation Board Under Slab and at Exterior Face of Foundation Wall:
2" XPS Owens-Corning Foamular or equal
shorturl.at/ruLN3

7.1.2 Interior of CMU Cells not grouted for reinforcing:

Option 1: Pre-molded EPS foam inserts:
<https://universalconstructionfoam.com/categories/cmu-insulation-blocks/>

Option 2: Perlite Loose Fill
<https://www.perlite.org/wp-content/uploads/2018/03/perlite-loosefill-insulation.pdf>

7.1.3 High Density Batt Insulation

at Framed Clerestory Walls & Front Alcove Wall:
Owens-Corning High Density EcoTouch or equal
shorturl.at/sLO36

at Roof Framing:
Owens-Corning High Density R-38C or equal
shorturl.at/ciFY6

7.2 Roofing & Wall Finish at South Alcove Framed Wall:

7/8" Corrugated Steel Factory Paint Finish
<https://www.westernstatesmetalroofing.com/corrugated-metal-roofing-sheets>

Gutter at Porch Roof facing Sidewalk

Division 8 Doors & Windows

8.1 Exterior Doors & Frames:
3-0 x 6-8 Hollow Painted Steel
Medium Duty Commercial Hardware (Hinges, Locksets, Closers, Alum.Thresholds & Weatherstripping)

8.2 Toilet Stall Doors
(3) Site Built of Vertical T&G Wood on 1x frame with diag. bracing
Hinges & Privacy Latch Hardware

8.3 Site built Fixed Clerestory Windows
wood frames with fixed P62 Obscure Glass

Mirrors listed under Bath Accessories

Division 9 Finishes

9.1 Exterior Siding & Trim at Clerestory Walls

1x6 T & G Siding & 1x Trim installed over Tyvek Drainwrap or Equal
Semi-Transparent Stain

Alternate 1: Fiber Cement Siding & Trim
Alternate 2: Corrugated Steel with Factory Painted Finish & matching trim pieces

9.2 Finish @ Split Face of CMU: Clear Sealer

9.3 Interior Finish at Upper Walls above CMU, Frame Wall at South Alcove & Ceiling:

Aspen Wall Wood 1 x 6 T&G, 1x trim, clear finish
<https://aspenwallwood.com/our-work/>

or

3/4" Plywood with FRP Panels & Seam Trim

9.4 Interior Finish at CMU Restroom Walls: Washable Paint

9.5 Protective Finish over Exterior Insulation @ slab edges above grade:

Surface Bonding Cement (finish similar to stucco) over hardware cloth
Quikrete Quikwall, Sakrete or equal
<https://www.quikrete.com/productlines/quikwallsurfacebondingcement.asp>

9.6 Restrooms & Mech. Room Floors: Self-Leveling Epoxy w/ Decorative Flakes & Clear Topcoat

Division 10 Specialties - Bath Accessories

10.1 Soap Dispenser

Fast Dry HK-RSD01
Wall Mount - Automatic - Liquid Soap Dispenser, Stainless
<https://www.restroomdirect.com/RSD01-stainless-automatic-soap-dispenser.aspx>
[\$106 @ Restroom Direct 1/14/22]

10.2 Hand Dryer

World Dryer Airmax High Speed
<https://www.restroomdirect.com/AirMax.aspx>
[\$459 @ Restroom Direct 1/14/22]

10.3 Baby Changing Station

Foundations Model Number: 5410339
Stainless Series, Horizontal, Surface Mount, Stainless Steel Shell, Polyethylene Interior
<https://www.restroomdirect.com/foundations-5410339.aspx>
[\$449 @ Restroom Direct 1/14/22]

10.4 Mirrors

Bradley Channel Frame Mirror 18 x 24 Model # 781-018240
<https://www.restroomdirect.com/bradley-781-018240-Lavatory-Mirror.aspx>
[\$77 @ Restroom Direct 1/14/22]

10.5 Toilet Tissue Dispensers

Bradley Dual Roll Dispenser Model # 5224-000000
<https://www.restroomdirect.com/bradley-5224-000000-Toilet-tissue-Dispenser.aspx>
[\$20 @ Restroom Direct 1/14/22]

10.6 Napkin Disposal

Bradley 4A10-110000
<https://www.restroomdirect.com/bradley-4A10-Napkin-Disposal.aspx>
[\$48 @ Restroom Direct 1/14/22]

10.7 Grab Bars

24 inch: Bradley 8120-001240
<https://www.restroomdirect.com/bradley-812-001240-Grab-Bar.aspx>
[\$35 @ Restroom Direct 1/14/22]

42 inch: Bradley 8120-001420
<https://www.restroomdirect.com/bradley-8120-001420-Grab-Bar.aspx>
[\$40 @ Restroom Direct 1/14/22]

Division 15 Plumbing & Mechanical

15.1 Plumbing Fixtures and Fittings

15.1.1 Bottle Filling Station
Halsey-Taylor Endura II Wall Mounted Unit
shorturl.at/berzD
[\$2899 @ Webstaurant Store 1/14/22]

15.1.2 Toilets - Stainless steel mounted with Carrier
Acorn R2105-W-1 or equal
shorturl.at/hjrzD
[\$924 @ Global Industrial 1/14/22]

15.1.3 Urinal - stainless steel
Acorn High Efficiency model 1709 HEU
<https://www.acorneng.com/penal-ware-ada-ss-he-urinal-1709heu>

15.1.4 Lavatories - stainless steel wall mounted
Elkay ELVWQ2219SACMC or equal
includes drain, mixing valve, overflow & sensor faucet
shorturl.at/dxPS7
[\$1859 @ Webstaurant Store 1/14/22]

15.1.5 Floor Drains - as recommended by Plumbing Subcontractor

15.2 Water Heating System
As Recommended by Plumbing Subcontractor

15.3 Heating & Ventilation System
Wall or Ceiling-Mounted Units Controlled at Mech Room

Division 16 Electrical

Lighting & Receptacle Outlets
Ceiling Mounted LED Fixtures on Timer Control
Electric Hand Dryers listed under Bath Accessories

Connie Giles Architecture, Inc.
160 Society Drive Unit I
Telluride, CO 81435
970-728-3957
connie@conniegilesarchitecture.com

Flanders Park
Restrooms
Dolores, CO

FOR PRELIMINARY PRICING

ISSUED:
01.17.22
FOR PRELIMINARY
PRICING

Specs

A4